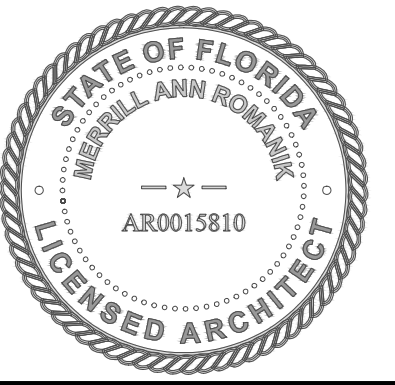


# POMPANO BEACH FIRE / EOC FACILITY

2121 NW 3RD AVENUE  
POMPANO BEACH, FL. 33060



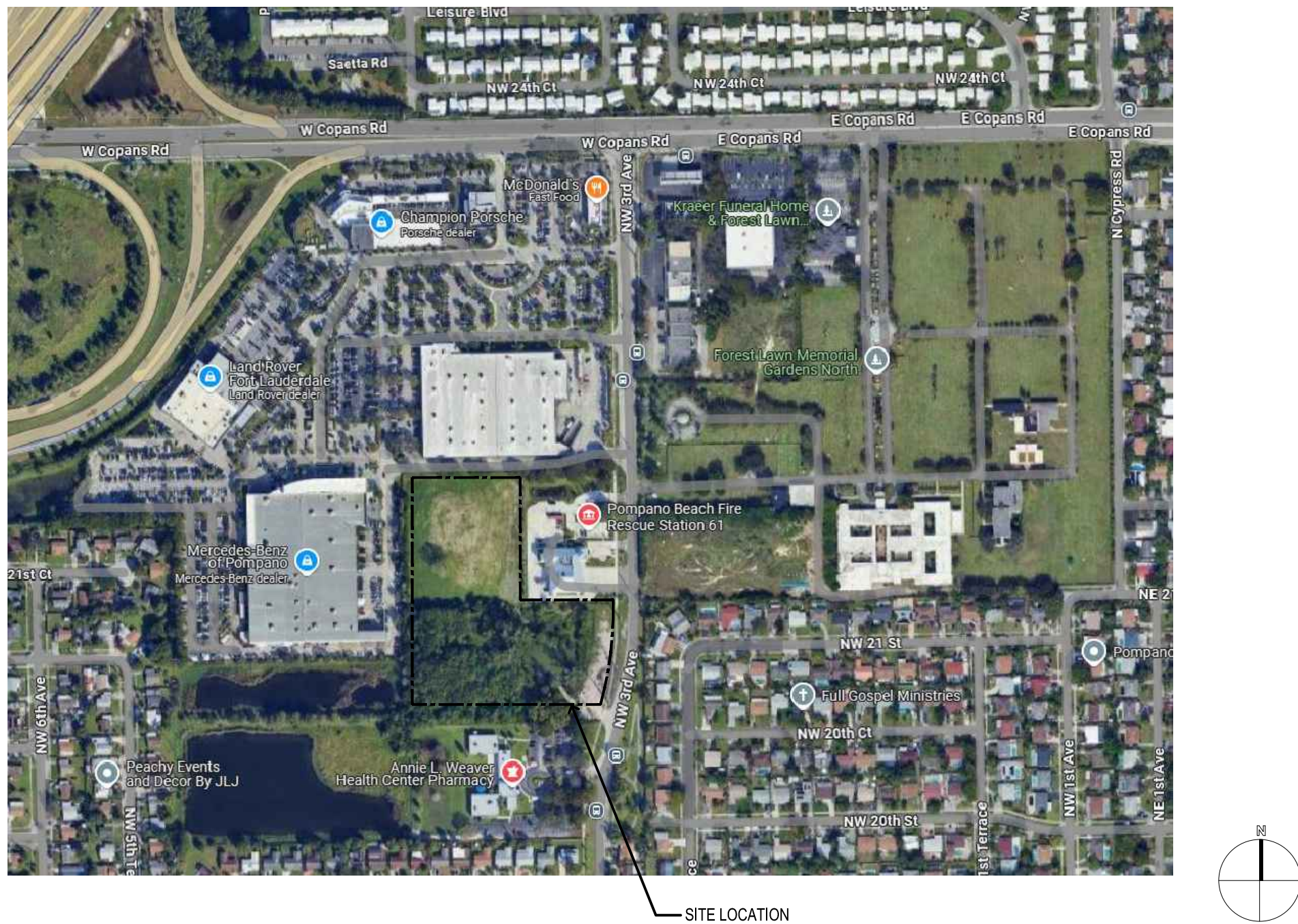
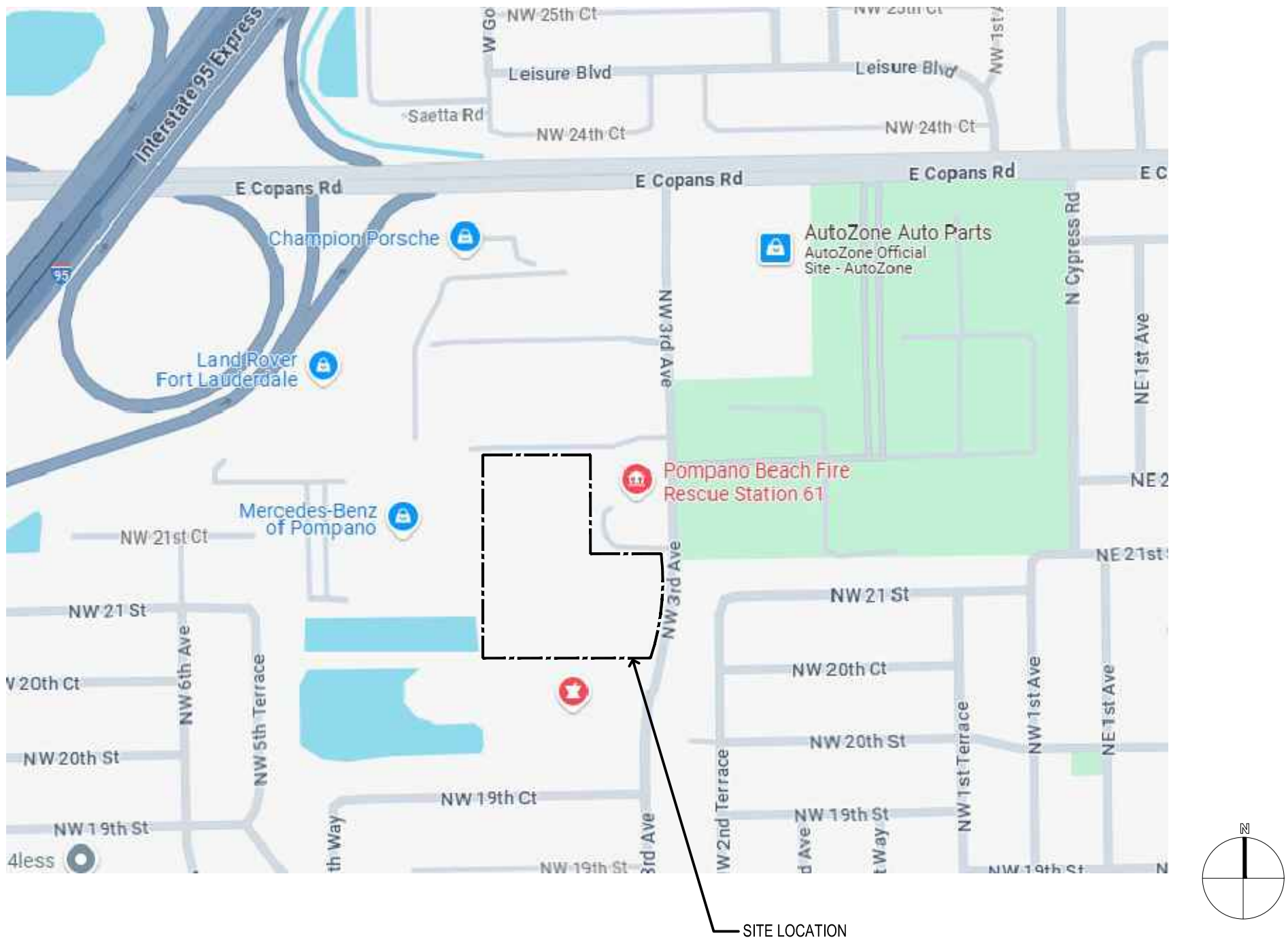
Merrill Ann Romanik  
AR 0015810  
Seal



- REX HARDIN
  - ALISON FOURNIER
  - AUDREY FESIK
  - RHONDA SIGERSON-EATON
  - BEVERLY PERKINS
  - DARLENE SMITH
  - GREG HARRISON
  - JOHN SFIROPOULOS
  - TAMMY GOOD
- MAYOR AT LARGE  
VICE MAYOR, DISTRICT 3  
COMMISSIONER, DISTRICT 1  
COMMISSIONER, DISTRICT 2  
COMMISSIONER, DISTRICT 4  
COMMISSIONER, DISTRICT 5  
CITY MANAGER  
CITY ENGINEER  
CAPITOL IMPROVEMENTS MANAGER



| INDEX OF DRC SUBMITTAL DRAWINGS - 11/12/25 |        |                                      |   |
|--|--------|--------------------------------------|---|
| 001  | T-001  | COVER SHEET                          | • |
| 002  | 1 OF 3 | SURVEY                               | • |
| 003  | 2 OF 3 | SURVEY                               | • |
| 004  | 3 OF 3 | SURVEY                               | • |
| 005  | AS-101 | ENLARGED ARCHITECTURAL SITE PLAN     | • |
| 006  | AS-102 | ENLARGED ARCHITECTURAL SITE PLAN     | • |
| 007  | LD-101 | TREE DISPOSITION PLAN                | • |
| 008  | LP-001 | PLANTING NOTES                       | • |
| 009  | LP-002 | PLANTING NOTES                       | • |
| 010  | LP-101 | PLANTING NOTES                       | • |
| 011  | LP-501 | PLANTING DETAIL                      | • |
| 012  | LI-101 | IRRIGATION PLAN                      | • |
| 013  | LI-501 | IRRIGATION DETAILS                   | • |
| 014  | A-101  | FLOOR PLAN                           | • |
| 015  | A-201  | BUILDING ELEVATIONS                  | • |
| 016  | GI-000 | CIVIL COVER SHEET                    | • |
| 017  | GI-001 | LEGEND & ABBREVIATIONS               | • |
| 018  | GI-002 | GENERAL CONSTRUCTION NOTES           | • |
| 019  | GI-003 | CONSTRUCTION SPECIFICATIONS          | • |
| 020  | CG-101 | EROSION AND CONTROL PLAN             | • |
| 021  | CG-501 | EROSION CONTROL DETAILS              | • |
| 022  | CD-101 | DEMOLITION PLAN                      | • |
| 023  | CP-101 | PAVING, GRADING AND DRAINAGE PLAN    | • |
| 024  | CP-501 | PAVING, GRADING AND DRAINAGE DETAILS | • |
| 025  | CP-502 | PAVING, GRADING AND DRAINAGE DETAILS | • |
| 026  | CP-503 | PAVING, GRADING AND DRAINAGE DETAILS | • |
| 027  | CP-504 | PAVING, GRADING AND DRAINAGE DETAILS | • |
| 028  | CU-101 | WATER AND SEWER PLAN                 | • |
| 029  | CU-501 | WATER AND SEWER DETAILS              | • |
| 030  | CU-502 | WATER AND SEWER DETAILS              | • |
| 031  | CU-503 | WATER AND SEWER DETAILS              | • |
| 032  | CU-504 | WATER AND SEWER DETAILS              | • |
| 033  | CM-101 | PAVEMENT MARKING AND SIGNAGE PLAN    | • |
| 034  | CM-501 | PAVEMENT MARKING AND SIGNAGE DETAILS | • |
| 035  | CP-101 | CPTD SITE PLAN                       | • |
| 036  | CP-102 | CPTD COMMENTS AND RESPONSES          | • |
| 037  | LX-101 | PERVIOUS AREA EXHIBIT                | • |
| 038  | A-202  | COLOR BUILDING ELEVATIONS            | • |
| 039  | PH-101 | PHOTOMETRIC PLAN                     | • |
| 040  |        |                                      |   |
| 041  |        |                                      |   |
| 042  |        |                                      |   |
| 043  |        |                                      |   |
| 044  |        |                                      |   |
| 045  |        |                                      |   |



2

LOCATION MAP  
SCALE: N.T.S.

1

AERIAL VIEW  
SCALE: N.T.S.

## FLORIDA ENGINEERING SERVICES

HVAC, ELECTRICAL, PLUMBING, AND FIRE PROTECTION  
34 N.W. 168TH STREET  
NORTH MIAMI BEACH, FL 33169  
T: 305-653-0212 F: 305-653-0232

## SAAD ELIA EL-HAGE

STRUCTURAL ENGINEER  
5601 NW 9th AVENUE (POWERLINE ROAD), SUITE 206  
FORT LAUDERDALE, FLORIDA 33309  
T: 954-771-8149 F: 954-771-8169

## KEITH & ASSOCIATES, INC.

CIVIL ENGINEERING AND LANDSCAPING  
301 EAST ATLANTIC BOULEVART  
POMPANO BEACH, FL 33060  
T: 954-788-3400 M: 954-593-0566

## SYNALOVSKI ROMANIK SAYE

ARCHITECTURE PLANNING INTERIOR DESIGN  
1800 ELLER DRIVE, SUITE 500  
FORT LAUDERDALE, FLORIDA 33316  
T.954.961.6806 F.954961.6807  
WWW.SYNALOVSKI.COM

## POMPANO BEACH FIRE / EOC FACILITY

2121 NW THIRD AVENUE  
POMPANO BEACH, FL 33060  
CLIENT: CITY OF POMPANO BEACH

DESIGN DELIVERABLE: DEVELOPMENT  
ISSUE DATE: 10/02/2025

PROJECT NUMBER: 2024-0559.0000

DRAWN BY: CB

CHECKED BY: MR

Copyright (c) by SYNALOVSKI ROMANIK SAYE, LLC  
All Rights Reserved.

SHEET TITLE:  
COVER SHEET

SHEET NUMBER:  
T-001